

# NDP-20 Series

100L/min Maximum Flow Rate  
3/4 inch Port Size

## Specifications

Port Size		3/4" (20A)
Liquid	Intake	Metal Body: Rc3/4" Plastic Body: JIS/DIN/ANSI Compatible Flange or Rc3/4" (P20BT: JIS10K20A)
	Discharge	Metal Body: Rc3/4" Plastic Body: JIS/DIN/ANSI Compatible Flange or Rc3/4" (P20BT: JIS10K20A)
Air	Supply	Rc 1/4" includes ball valve
	Exhaust	Rc 3/4" w/ internal silencer
Air Supply Pressure		0.2 - 0.7 MPa
Maximum Discharge Pressure		0.7 MPa

Discharge Volume Per Cycle	Rubber diaphragm: 350mL PTFE diaphragm: 240mL	
Maximum Size Solid	2mm	
Net Weight	NDP-20BA□	NDP-20BA□: 7.5kg
	NDP-20BS□	NDP-20BS□: 12.5kg
	NDP-20BP□	NDP-20BP□: 7.0kg
		NDP-20BT: 20.0kg

## Metal Body Pumps



NDP-20BA □



NDP-20BS □

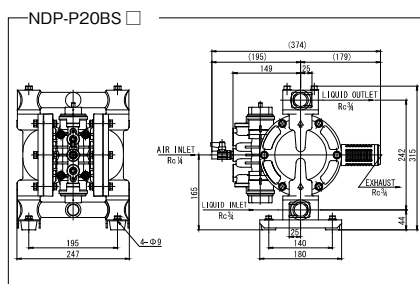
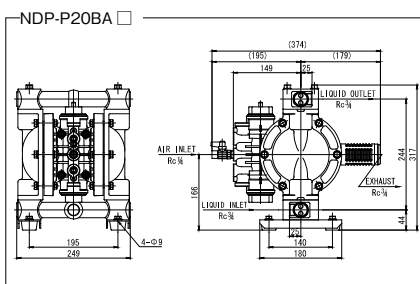
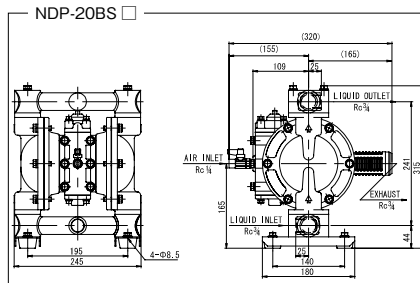
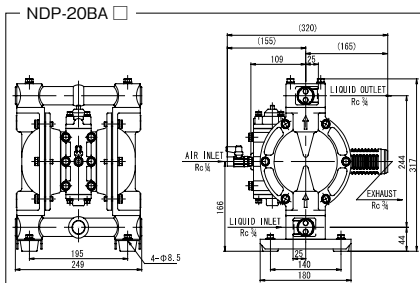


NDP-P20BA □

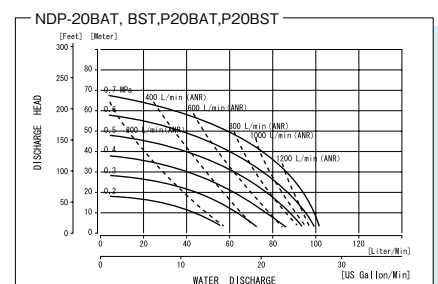
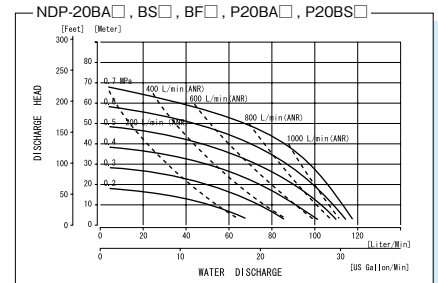
## Model Chart

	Body Material	Diaphragm Material						
		Neoprene (CR)	Buna N (NBR)	EPDM	Viton® (FKM)	PTFE	HytreI® (TPEE)	Santoprene® (TPO)
Aluminum Center Body	Aluminum (ADC12)	NDP-20BAC (851316)	NDP-20BAN (851317)	NDP-20BAE (851318)	NDP-20BAV (851319)	NDP-20BAT (851320)	NDP-20BAH (851729)	NDP-20BAS (852690)
	Stainless Steel (SCS14/SUS316)	NDP-20BSC (851321)	NDP-20BSN (851322)	NDP-20BSE (851323)	NDP-20BSV (851324)	NDP-20BST (851325)	NDP-20BSH (851730)	NDP-20BSS (852691)
Polypropylene Center Body	Aluminum (ADC12)	NDP-P20BAC (854052)	NDP-P20BAN (854053)	NDP-P20BAE (854054)	NDP-P20BAV (854055)	NDP-P20BAT (854056)	NDP-P20BAH (854057)	NDP-P20BAS (854058)
	Stainless Steel (SCS14/SUS316)	NDP-P20BSC (854066)	NDP-P20BSN (854067)	NDP-P20BSE (854068)	NDP-P20BSV (854069)	NDP-P20BST (854070)	NDP-P20BSH (854071)	NDP-P20BSS (854072)

## Dimensions



## Performance Curve



# Body Materials

Models	NDP-20BA□, NDP-P20BA□	NDP-20BS□, NDP-P20BS□	NDP-20BP□, NDP-P20BP□	NDP-P20BTT
Check Valve	Same material as the diaphragm			
Valve Seat	SMS1025	SUS316	PPG	PTFE
Valve Guide	A5056	SCS14	PPG	PTFE
Center Disk	BA□:SUS316 BAT:A5056	SUS316	PPG (SCS13*)	PFA (SUS316*)

\* Material of the insert

✓ Maximum Dry Suction Lift is 3M for Rubber Diaphragm and 1.5M for PTFE Diaphragm.

## Plastic Body Pumps



Air supply pressure of Plastic Body Pumps is depending on the liquid temperature. Be sure to check the Liquid temperature – Pressure Correlation Chart.



NDP-P20BP □ Flange



NDP-P20BTT

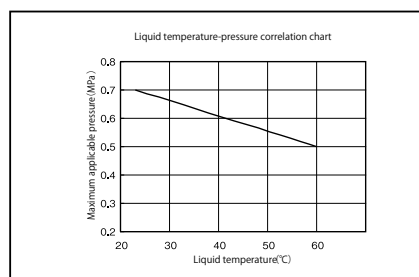
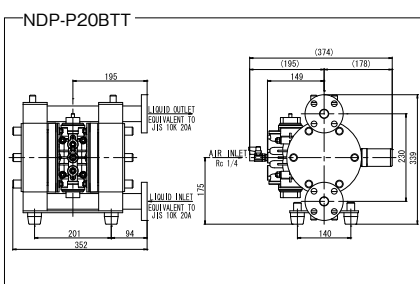
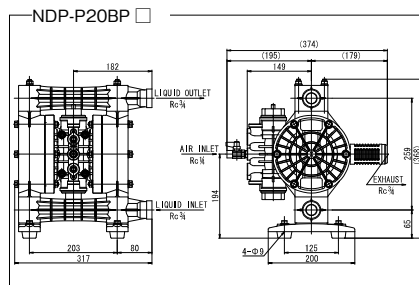
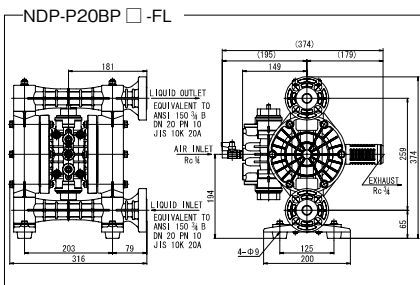
### Model Chart

		Body Material	Diaphragm Material						
			Neoprene (CR)	Buna N (NBR)	EPDM	Viton® (FKM)	PTFE	Hytre® (TPEE)	Santoprene® (TPO)
Polypropylene Center Body	JIS/DIN/ANSI Flange	Polypropylene (PPG)	NDP-P20BPC-FL (854101)	NDP-P20BPN-FL (854102)	NDP-P20BPE-FL (854103)	NDP-P20BPV-FL (854104)	NDP-P20BPT-FL (854105)	NDP-P20BPH-FL (854106)	NDP-P20BPS-FL (854107)
	JIS Flange	PTFE	—	—	—	—	NDP-P20BTT* (854323)	—	—
	Rc thread	Polypropylene (PPG)	NDP-P20BPC (854080)	NDP-P20BPN (854081)	NDP-P20BPE (854082)	NDP-P20BPV (854083)	NDP-P20BPT (854084)	NDP-P20BPH (854085)	NDP-P20BPS (854086)
Aluminum Center Body	JIS/DIN/ANSI Flange	Polypropylene (PPG)	NDP-20BPC-FL (853819)	NDP-20BPN-FL (853820)	NDP-20BPE-FL (853821)	NDP-20BPV-FL (853822)	NDP-20BPT-FL (853823)	NDP-20BPH-FL (853824)	NDP-20BPS-FL (853825)
	Rc thread	Polypropylene (PPG)	NDP-20BPC (851663)	NDP-20BPN (852596)	NDP-20BPE (852407)	NDP-20BPV (852597)	NDP-20BPT (851664)	NDP-20BPH (851734)	NDP-20BPS (852692)



\* Purchaser shall not directly or indirectly, export, re-export tranship or otherwise transfer this product in violation of any applicable export control laws and regulations promulgated and administered by the governments of the countries asserting jurisdiction over the parties or transaction.

### Dimensions



### Performance Curve

